



1

---

---

---

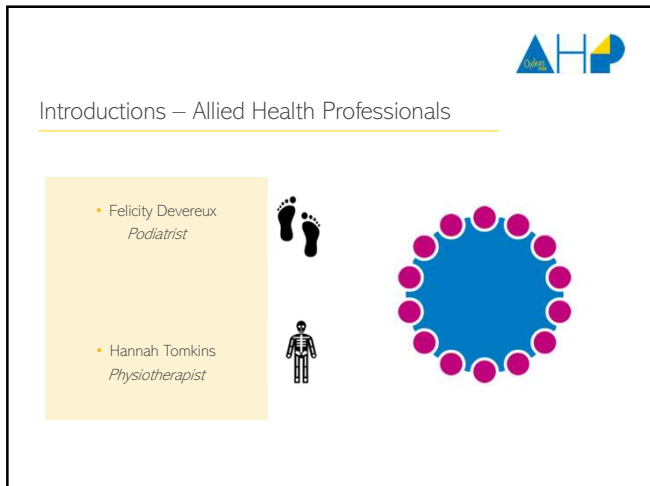
---

---

---

---

---



2

---

---

---

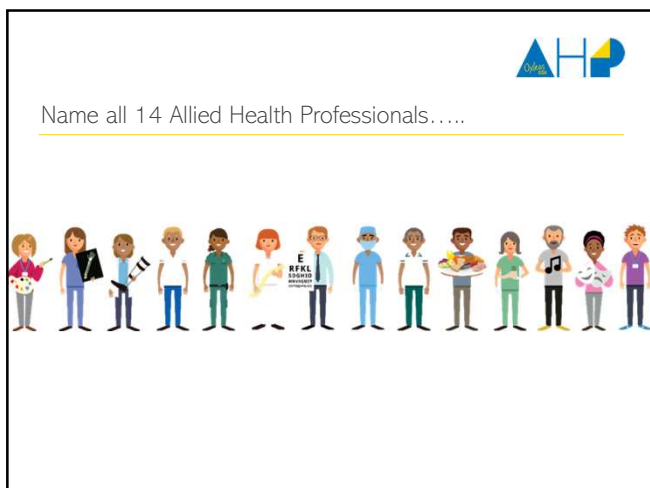
---

---

---

---

---



3

---

---

---

---

---

---

---

---



## Allied Health Professionals

---

Podiatrist

Speech & Language Therapy

Operating Department Practitioner

Dietitian

Paramedic

Prosthetist & Orthotist



Art Therapist

Occupational Therapist

Orthoptist

Physiotherapist

Drama Therapist

Diagnostic Radiographer

Music Therapist

Osteopath

4

---

---

---

---


---

---

---

---


4



## Allied Health Professionals within Oxleas

---

- Have you worked with an AHP before? If yes, what profession?
- Within Oxleas, we have 5 AHP professions which start at a Band 5 level:
  - Podiatry
  - Speech & Language Therapy
  - Dietetics
  - Physiotherapy
  - Occupational Therapy




---

---

---

---

---

---

---

---

5



## What do you think AHPs do day-to-day?

---



6

---

---

---

---

---

---

---

---

6



### AHP Overview

3

Third largest workforce in the NHS



Work as part of an MDT or autonomously



Work with patients from birth to death



Work with patients on short-term and long-term goals to improve their health outcomes through rehab



Acute, community, local authorities, charities, private, education, research & leadership



AHP community is also made up of our support workers & assistant practitioners

7

---

---

---


---

---

---

---

7



### Podiatry

Wound care –  
Diabetic Foot  
Wounds

MSK – sports,  
prescribing insoles,  
gait

Nail surgery – qualify  
being able to do  
local anaesthetics,  
minor surgery

Podiatric Surgeon

Independent Non-  
Medical Prescriber

Not toe nail cutters!

27 May, 2025

8

---

---

---


---

---

---

---

8



### Physiotherapy

Restore function  
& reduce future  
risk

Bones, joints &  
soft tissue

Brain & nervous  
system

Heart &  
circulation

Lungs &  
breathing

Not a  
masseuse!

9

---

---

---

---

---

---

---

9



**Dietitian**



Not the food police!	Assess, diagnose & treat dietary problems	Eating disorders
PEG & NG Tube	Diabetes	Routine Care – Private work

10

10

---

---

---

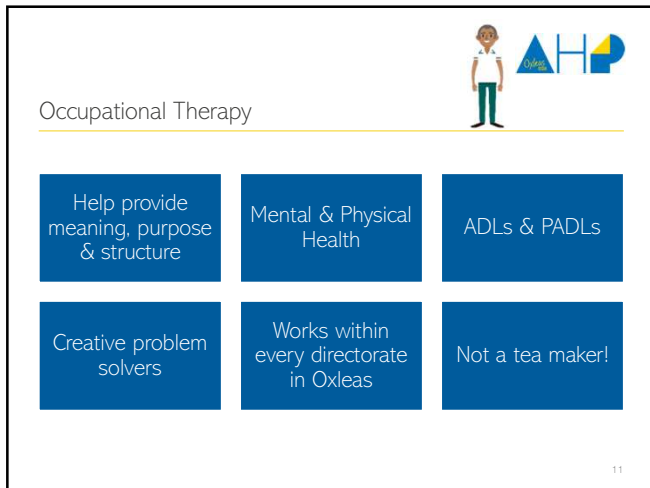
---

---


---

---

---



**Occupational Therapy**



Help provide meaning, purpose & structure	Mental & Physical Health	ADLs & PADLs
Creative problem solvers	Works within every directorate in Oxleas	Not a tea maker!

11

11

---

---

---

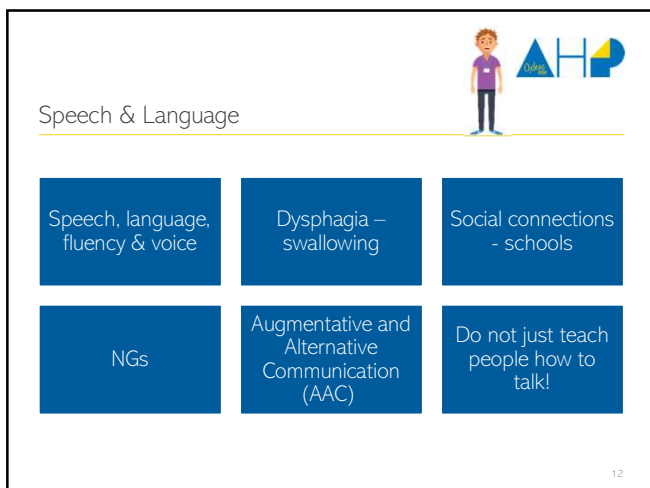
---

---


---

---

---



**Speech & Language**



Speech, language, fluency & voice	Dysphagia – swallowing	Social connections - schools
NGs	Augmentative and Alternative Communication (AAC)	Do not just teach people how to talk!

12

12

---

---

---

---

---

---

---

---



### Case Study

- Doris, 79 year old
  - Medical history – Uncontrolled Type 2 Diabetes, Recent stroke, Hypertension, COPD
  - Recently been discharged from hospital, following her stroke, lives alone, chairbound with carers 3x per day
  - Her goal is to be able to buy her a newspaper from her local shop
- 
- Which of the Oxleas AHPs would be involved in her care?



13

---

---

---

---

---

---

---

---



### Case Study no.2

- James, 11 year old
  - Medical history – Cerebral Palsy, severe nut allergy, neurodivergent
  - Starting secondary school – specialist school, complaining of pain in his shin
  - The school have asked for James to be assessed in his new environment
- 
- Which of the Oxleas AHPs would be involved in her care?



14

---

---

---

---

---

---

---

---



### Additional Info

- We have just covered the tip of the iceberg of the role of AHPs
- Enquire about observing AHPs – especially if you work with them within your MDT
- Draw on the knowledge of AHPs!
- Unsure on their job role – just ask ☺
- Be aware of referral pathways – Greenwich Podiatry (open referrals)
- Ox - [Shining a light on AHPs Day \(The Ox\) \(oxleas.nhs.uk\)](https://oxleas.nhs.uk)
- Head of AHPs – Holly Laws



15

---

---

---

---

---

---

---

---